

GHI FORMWORK

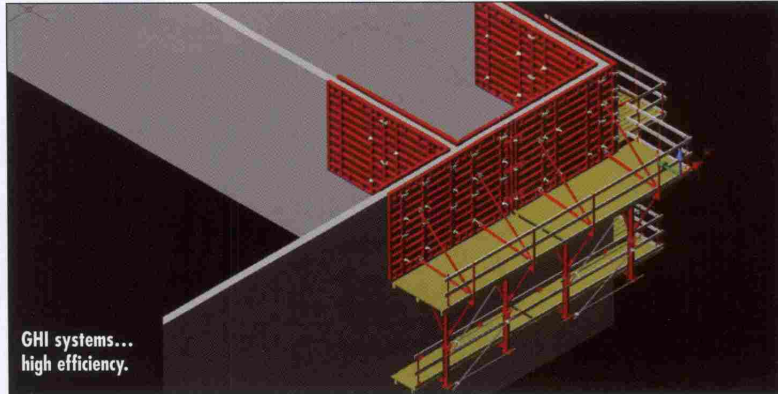
Growing prowess

THE Dubai subsidiary of GHI Formwork, a formwork company established 20 years ago in Germany, is all set for its participation at the Big 5 show, displaying its own brand of formwork called TriTec, among others.

Since launching operations in Dubai in 2003, it has expanded rapidly, operating through its depot in Al Quoz.

Speaking on its rapid growth, Ekkehart Misch, CEO of GHI Formwork says: "We have evolved from a third-party component supplier to a full systems provider for some of the largest contractors in the market. Our clients include prominent firms such as Arabtec, Ascon, Al Ahmadiah and Al Basti & Mukta. GHI's equipment is now a familiar sight on construction sites throughout the UAE."

From its tentative first steps in the component market, GHI's logistical and technical strength has grown to such an extent that it now fulfils complex civil works solutions. A good example is its involvement in the Emirates Aluminium (Emal) smelter complex for Al Futtaim Carillion in the UAE. A range of products are being used on the project including TriTec panel formwork, GHI



climbing scaffold KG 240 and GHI Multiflex.

The TriTec panel formwork is a universal and versatile panel system. With its 2.70 m and 3.30 m system heights, combined with only six different panel widths, it can be used on small and large construction sites.

The system also boasts high efficiency, according to Misch. "Few components allow faster shuttering times and reduce losses. This German panel system has only one aligning device which connects the TriTec panels flush with tension and vibration

resistant joints in a single action. It also permits multi-panel erection.

"TriTec's frame thickness of 12 cm. It's interior stiffening ribs make the panels extra rugged and permit full-speed concrete pouring up to a height of 3.3m. Multibonded plywood with birch core is included. Moreover, TriTec comes with a clearly defined increment of 30 cm. Hence, material requirements on site are reduced and utilisation rates increase".

The speed of construction in high-rises is often determined through the progress made when building the cores. Any delays there affects the general workflow on the site. Therefore, GHI is providing its KG climbing scaffold which can be adjusted to suit any building shape. The core is detached from the rest of the structural work and climbs two or three floor ahead. Therefore, the desired schedule can be successfully achieved. Misch explains, "Even during unusual applications, the KG 240 and KG 180 systems provide extremely high levels of safety and flexibility at any height. Crane time is saved when transporting the units because of the fixed connection to the formwork. The KGF 240 and KG 180 climbing scaffold systems serve as framework brackets for supporting the TriTec wall formwork".

GHI's Multiflex is the slab formwork system for any layout and height. It consists of German manufactured solid full spruce H20



A good example is its involvement in the Emirates Aluminium (Emal) smelter complex for Al Futtaim Carillion in the UAE. A range of products are being used on the project including TriTec panel formwork, GHI climbing scaffold KG 240 and GHI Multiflex.

beams from German company Rettenmeier, hot dip galvanised tripods and cross heads. GHI tripods universally fit to any prop type and the cross heads come with a locking device, preventing it from falling out of the prop when the set is moved.

The 20 kN props are tested to class D and 30 kN props tested to class E, all fully hot-dip galvanised, to make the system complete. GHI props range from 300 cm to 550 maximum extension length with 50 cm increments given.

All its products are manufactured to meet the highest quality standards, according to him. "All GHI systems fulfil international safety requirements and are in line with the leading German standard. Load bearing devices have been certified according to German standards (EN 1065) in European laboratories," says Misch.

"We have been awarded the smelter project thanks to our competent and practical design, competitive pricing and instant stock availability. All of our equipment is compatible to the existing stock of Al Futtaim Carillion, making it a sound investment for the client," he points out.

The smelter's four wet scrubber shells, measuring 19 m in length, 21 m in width and 14 m in height, have been completely designed with TriTec steel frame panels 330 cm. The wall shutter climbs together with the GHI KG240 jump forms, used as access platforms. GHI formwork's simple solution has allowed the contractor to pour the complete complex wall arrangement in just three complete lifts, he says.

In addition to the wet scrubber shells, the

entire central passage in the project itself is done completely with GHI Multiflex, featuring a large quantity of its strong and durable 30 kN props. GHI Formwork TriTec equipment is also used to form an extensive culvert system throughout the plant, measuring approximately 1,500m in length.

Presently, GHI is also tendering for the slab formwork of the wet scrubber shells, where it proposes to use its lightweight heavy-duty GHI D-15 towers – with a footprint of just 1m by 1m. The 14m high tow-

ers can support a load of up to 220 kN each and come only in six parts. With its self-locking device, they are easy to erect and dismantle, according to the company.

With major tower projects in the pipeline, GHI Formwork is confident of continued growth in the Gulf region.

GHI will be present with Swiss company Tobler Scaffolding at Stand B 333 in Hall 8 and Rettenmeier at Stand E10 in the Zabeel Hall.

Reader Enquiry No. 79

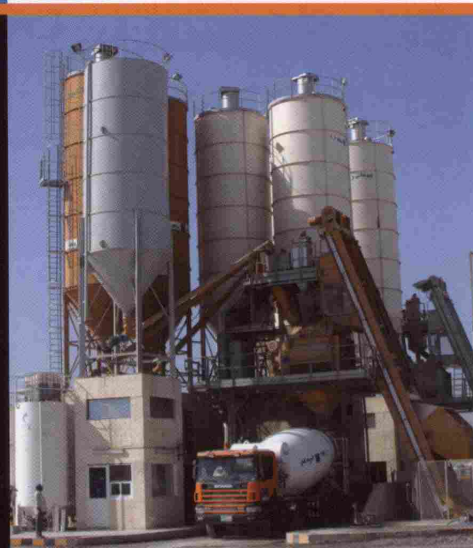


Production of certified concretes



Research, technological development, innovative processes and excellent quality are the objectives of a leading company whose projects, at the service of the world of "concrete", offer performance reliability, cost-effective services and operator safety.

CIFA proposes a wide range of systems to satisfy all possible installation and production capacity requirements, whilst respecting environmental impact conditions. The ideal solution for producing certified quality concrete.



CIFA 
plants

www.galfoorm.it

CIFA S.p.A. » Via Stati Uniti d'America, 26 » 20030 SENAGO (MI) Italy
» Tel. +39 02 990 131 » Fax +39 02 998 1157 » cifa@cifa.com » www.cifa.com